



BIOCHEMICAL MANAGEMENT

**GOVERNMENT COLLEGE JAITHARI,
DISTRICT- ANUPPUR (M.P.) INDIA**

POLICY

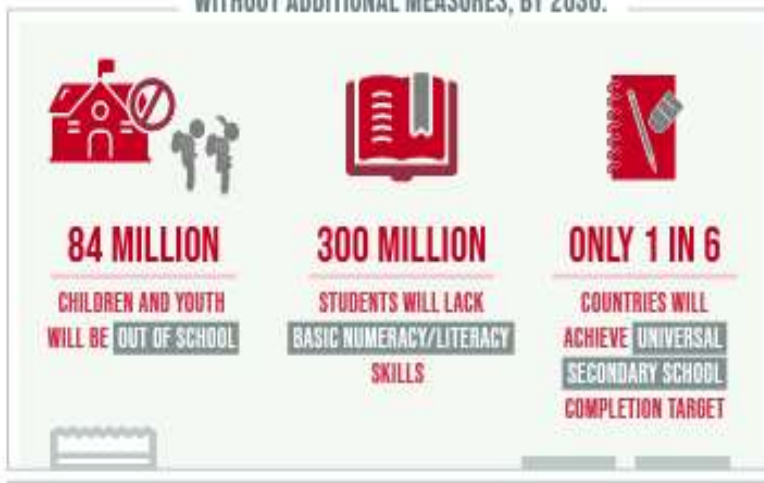


ENSURE INCLUSIVE AND EQUITABLE QUALITY EDUCATION AND PROMOTE LIFELONG LEARNING OPPORTUNITIES FOR ALL

DESPITE SLOW PROGRESS,

THE WORLD IS FALLING FAR BEHIND IN ACHIEVING QUALITY EDUCATION

WITHOUT ADDITIONAL MEASURES, BY 2030:

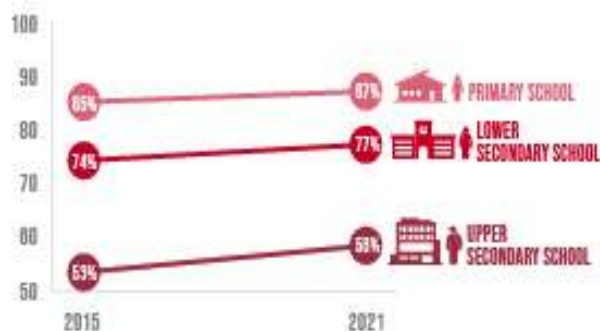


THE PANDEMIC

CAUSED LEARNING LOSSES IN **4 IN 5** OF **104 COUNTRIES** STUDIED

PRIMARY AND SECONDARY SCHOOL COMPLETION RATES ARE **RIISING**, BUT THE PACE IS SLOW AND UNEVEN

COMPLETION RATES



LOW- AND LOWER-MIDDLE-INCOME COUNTRIES FACE A NEARLY

\$100 BILLION

ANNUAL FINANCING GAP

TO REACH THEIR EDUCATION TARGETS



Mr. Ashok Kumar Rathour

Adhyaksh

Janbhagidari Samiti Govt. College Jaithari, Anuppur (M.P.)

Forward



Dear Esteemed Members of Government College Jaithari,

As the Adhyaksh of the Janbhagidari Samiti of Government College Jaithari, District Anuppur, Madhya Pradesh, it gives me immense pleasure to present this foreword to our comprehensive College Policy. Since our institution's establishment in 2012, we have been on a journey of growth, learning, and community engagement. This policy document marks another significant milestone in our college's development.

The Janbhagidari Samiti, or Public Participation Committee, plays a crucial role in bridging the gap between the college and the community. Our committee's vision aligns perfectly with the college's mission to provide quality education while fostering a sense of social responsibility among our students.

This College Policy is a testament to our collective efforts to create an institution that not only excels in academics but also prepares students to be responsible citizens. It encompasses various aspects of college life, from academic standards to community outreach programs, reflecting our commitment to holistic education.

I urge all stakeholders - students, faculty, staff, and community members - to embrace this policy wholeheartedly. It is through your active participation and adherence to these guidelines that we can truly realize the potential of our institution.

As we move forward, let us remember that the strength of our college lies in the spirit of 'Janbhagidari' - public participation. This policy is not just a document, but a shared vision for our college's future. Together, we can build an educational institution that serves as a beacon of knowledge and social progress in our region.

I look forward to your continued support and cooperation in implementing this policy and in furthering the growth of Government College Jaithari.

Sincerely,

**Mr. Ashok Kumar Rathour
Adhyaksh- Janbhagidari Samiti
Govt. College Jaithari
District Anuppur, (M.P.)**



Dr. Ramesh Singh Wate

Principal

Govt. College Jaithari, Anuppur (M.P.)

Forward



Dear Students, Faculty, and Staff,

As the Principal of Government College Jaithari, District Anuppur, Madhya Pradesh, it is my privilege to present our comprehensive College Policy. This document serves as a cornerstone for our institution, outlining our vision, mission, and the guiding principles that shape our academic environment.

Our college policy is designed to foster an atmosphere of academic excellence, personal growth, and social responsibility. It reflects our commitment to providing quality education while nurturing the diverse talents of our students. The policy encompasses various aspects of college life, including academic standards, code of conduct, extracurricular activities, and community engagement.

I encourage all members of our college community to familiarize themselves with this policy. It is not merely a set of rules, but a roadmap for our collective success. By adhering to these guidelines, we create a harmonious and productive learning environment that benefits everyone.

As we move forward, let us embrace these policies with enthusiasm and dedication. Together, we can build a college that not only imparts knowledge but also shapes responsible citizens who will contribute positively to society.

I look forward to working with all of you in upholding the high standards set forth in this policy and in continually striving for excellence in all our endeavors.

Sincerely,

Dr. Ramesh Singh Wate
Principal
Govt. College Jaithari
District-Anuppur (M.P.)

Govt. College Jaithari, Anuppur M.P.

Department of Higher Education M.P.

Biochemical Management Policy

1. Purpose: The purpose of this Biochemical Management Policy is to establish guidelines and procedures for the safe handling, storage, and disposal of biological and chemical materials within [College Name]. This policy aims to protect the health and safety of students, faculty, staff, and the environment.

2. Scope: This policy applies to all individuals, including students, faculty, staff, and contractors, who handle, use, store, or dispose of biological and chemical materials within the premises of [College Name].

3. Responsibilities:

➤ **College Administration:**

- Provide adequate resources, training, and facilities for safe biochemical management.
- Designate a Biochemical Safety Officer responsible for overseeing implementation and compliance.

➤ **Faculty and Researchers:**

- Ensure that all laboratory activities adhere to this policy.
- Conduct risk assessments and implement appropriate safety measures.
- Report any incidents, spills, or accidents promptly to the Biochemical Safety Officer.

➤ **Students:**

- Follow all safety guidelines and protocols during laboratory activities.
- Report unsafe conditions to the instructor or laboratory supervisor.

4. Biochemical Storage:

- Store biological and chemical materials in designated areas with proper labeling.
- Maintain an updated inventory of all materials.

- Segregate incompatible substances to prevent reactions.

5. Laboratory Safety:

- Adhere to standard operating procedures (SOPs) for all laboratory activities.
- Provide personal protective equipment (PPE) and ensure its proper use.
- Conduct regular safety drills and training sessions.

6. Waste Management:

- Dispose of biological and chemical waste in accordance with local, state, and federal regulations.
- Implement recycling programs for appropriate materials.
- Minimize the generation of hazardous waste through proper planning and procurement.

7. Emergency Response:

- Establish and communicate emergency procedures for spills, leaks, or accidents.
- Maintain readily accessible emergency response equipment and materials.
- Conduct regular drills to ensure preparedness.

8. Training:

- Provide mandatory training on biochemical safety for all individuals handling such materials.
- Update training regularly to incorporate new regulations and best practices.

9. Compliance:

- Regularly review and update the Biochemical Management Policy to reflect current regulations.
- Conduct periodic audits to ensure compliance with the policy.
- Implement corrective actions for non-compliance.

10. Communication:

- Disseminate the Biochemical Management Policy to all relevant parties.

- Encourage open communication about safety concerns and suggestions for improvement.

11. Review and Revision:

This Biochemical Management Policy will be reviewed annually and updated as necessary to reflect changes in regulations or best practices.

Prepared By:- Dr. Khushboo Khan

Verified By :- Dr. Shobha Tiwari

**Coordinator IQAC
Govt. College Jaithari**

**Principal
Govt. College Jaithari
Anuppur (M.P.) 484330**